

Andante *And. Gatt.* *M. f.*

pp. *And.*

mf.

Andante

Andante *Andante*

mf. *And. f. fine*



Handwritten musical notation on a five-line staff. The top staff uses a treble clef and the bottom staff uses a bass clef. The key signature has two sharps (F# and C#) and the time signature is 6/8. The notation includes various note values, rests, and dynamic markings.

Handwritten musical notation on a five-line staff. The notation continues with similar notation and a large brown stain on the right side.

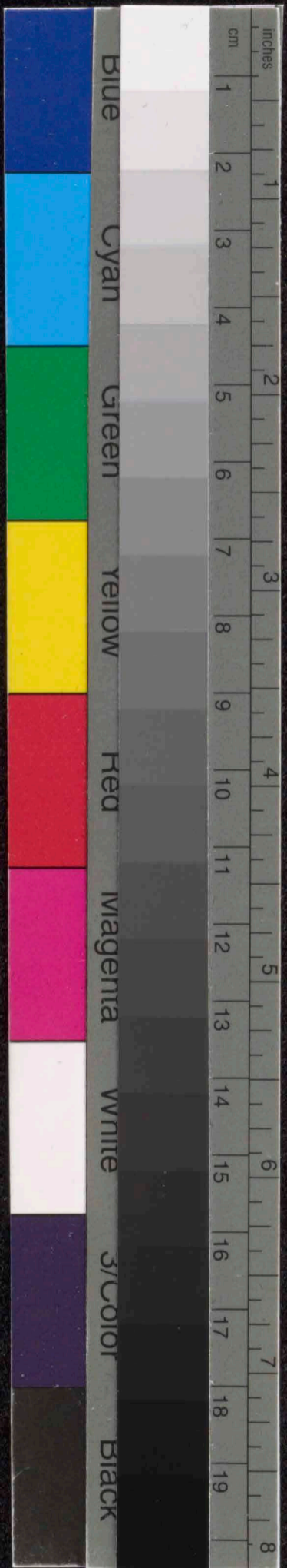
Handwritten musical notation on a five-line staff. The notation shows more complex rhythmic patterns and a large brown stain on the right side.

Handwritten musical notation on a five-line staff. The notation features dense rhythmic patterns and a large brown stain on the right side.

Handwritten musical notation on a five-line staff. The notation includes a 'ped.' marking and a large brown stain on the right side.

Handwritten musical notation on a five-line staff. The notation shows a change in rhythm and a large brown stain on the right side.

Handwritten musical notation on a five-line staff. The notation concludes the piece with various note values and a large brown stain on the right side.



Handwritten musical notation on a grand staff with treble and bass clefs, featuring various notes and rests.

Handwritten musical notation on a grand staff with treble and bass clefs, featuring various notes and rests.

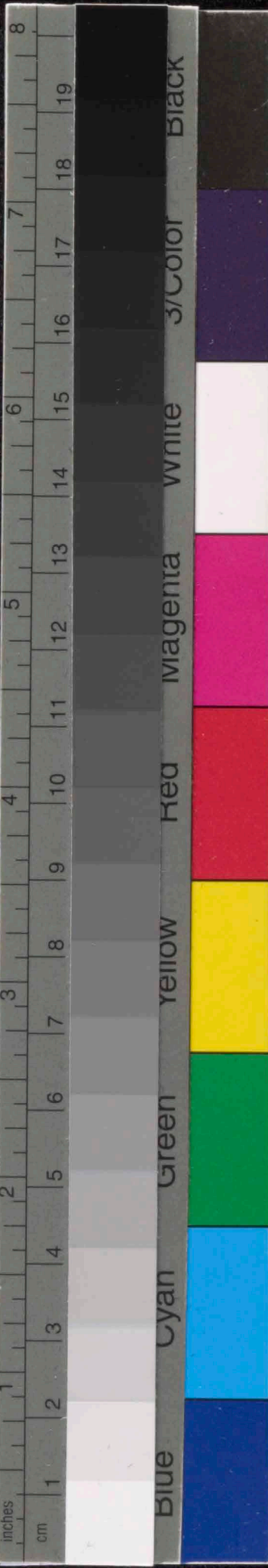
Handwritten musical notation on a grand staff with treble and bass clefs, featuring various notes and rests.

Handwritten musical notation on a grand staff with treble and bass clefs, featuring various notes and rests.

Handwritten musical notation on a grand staff with treble and bass clefs, featuring various notes and rests.

Handwritten musical notation on a grand staff with treble and bass clefs, featuring various notes and rests.

Empty musical staves at the bottom of the page.



4 178142 = 19 1/2

3/57 2 10

Op 40 No 25
Für my (left) hand
Piano

Handwritten musical notation on a grand staff. The top staff has a treble clef and the bottom staff has a bass clef. The notation is dense with notes, rests, and accidentals, including some triplets and slurs.

Handwritten musical notation on a grand staff, continuing the piece. It features a mix of note values and rests, with some dynamic markings.

A set of empty musical staves, consisting of two staves per system.

A set of empty musical staves, consisting of two staves per system.

A set of empty musical staves, consisting of two staves per system.

A set of empty musical staves, consisting of two staves per system.

A set of empty musical staves, consisting of two staves per system.

