

And. *Allo. molto* *Quint Impromptu*. Op. 142.

Dec. 1827 *Fr. Schubert*

Pianoforte

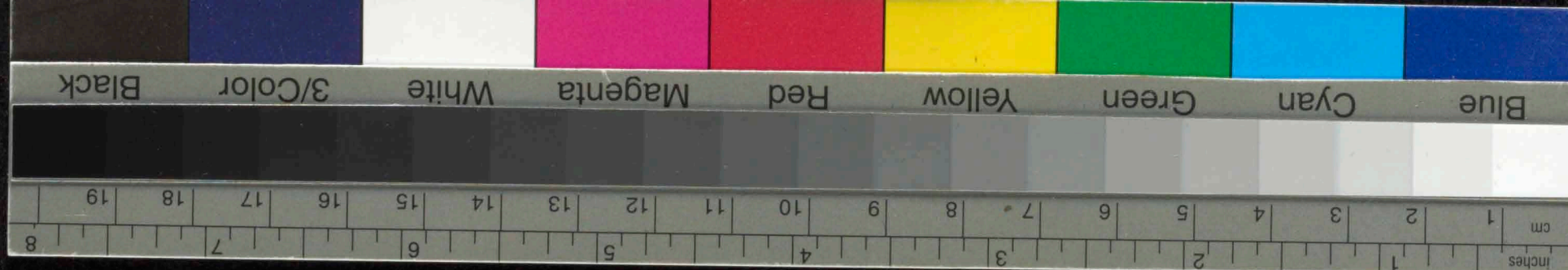
Handwritten musical notation for the first system, featuring a treble and bass clef with various notes and rests.

Handwritten musical notation for the second system, including a 'cresc.' marking.

Handwritten musical notation for the third system, including a 'cresc.' marking.

Handwritten musical notation for the fourth system, including a 'pp' marking.





2-6

The first system of handwritten musical notation consists of two staves. The upper staff is in treble clef with a key signature of two flats (B-flat and E-flat). It contains a melodic line with various note values, including eighth and sixteenth notes, and rests. The lower staff is in bass clef and contains a bass line with chords and single notes. A handwritten number '2-6' is written above the first few measures of the upper staff.

The second system of handwritten musical notation consists of two staves. The upper staff continues the melodic line from the first system. The lower staff continues the bass line. There are some red markings and a handwritten word 'over' written above the final measure of the upper staff.

The third system of handwritten musical notation consists of two staves. The upper staff continues the melodic line. The lower staff continues the bass line. There are several red markings and a handwritten number '7' above the final measure of the upper staff.

The fourth system of handwritten musical notation consists of two staves. The upper staff continues the melodic line. The lower staff continues the bass line. There are several red markings and a handwritten number '6' above the first measure of the upper staff.

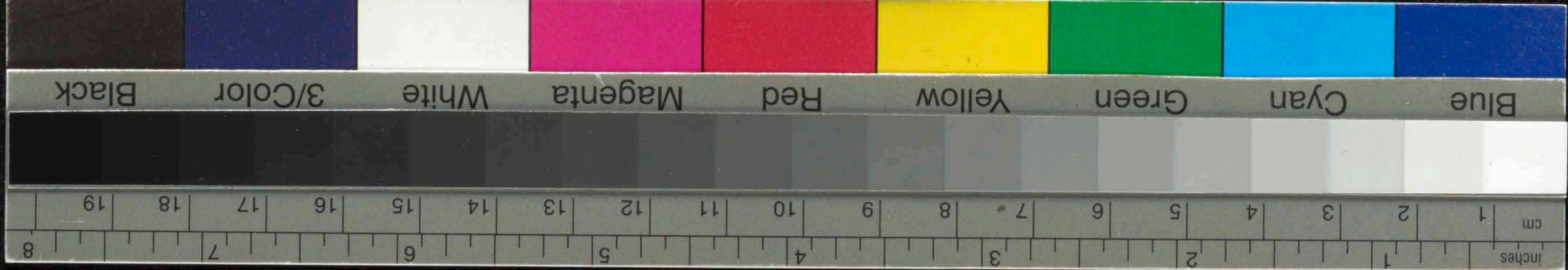
3-6

Decresci *brab* *sempre legato*

forte *forte* *mp* *pp*

gru *lwo*





Handwritten musical notation on a grand staff. The upper staff features a melodic line with a *leg.* (legato) marking and a *loco* marking. The lower staff contains a complex accompaniment with many beamed notes.

Handwritten musical notation on a grand staff. The upper staff has a melodic line with a *4-6* marking and a *5-6* marking. The lower staff includes a *con pedale appassionato* marking and a *simt.* (sustained) marking.

Handwritten musical notation on a grand staff. The lower staff features a *cresc.* (crescendo) marking. The notation is dense with many beamed notes.

Handwritten musical notation on a grand staff. The upper staff has a *decresc.* (decrescendo) marking. The notation is dense with many beamed notes.

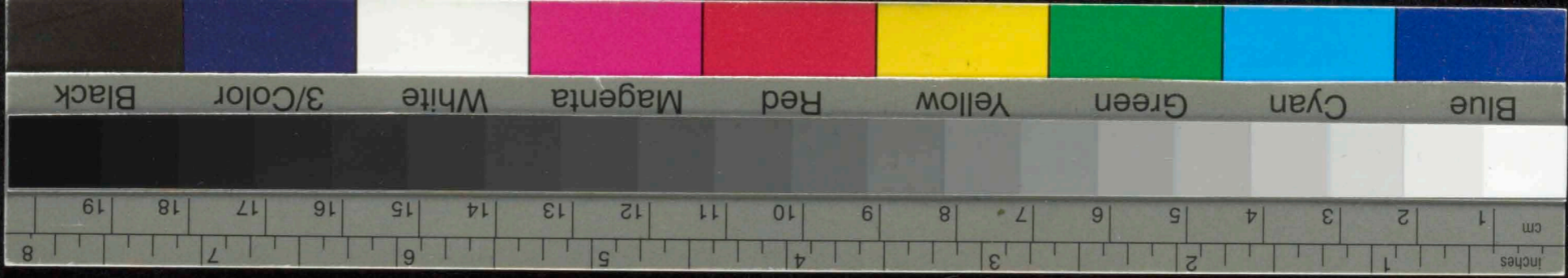
Handwritten musical notation on a grand staff, measures 1-4. The music is in a minor key with a 6/8 time signature. The first system shows a treble clef with a melodic line and a bass clef with a supporting bass line. The notation includes various note values, rests, and dynamic markings.

Handwritten musical notation on a grand staff, measures 5-8. This system continues the piece with similar notation to the first system, featuring a treble clef and a bass clef. A '2.' marking is visible at the beginning of the first staff.

Handwritten musical notation on a grand staff, measures 9-12. The notation includes a '6-6' marking at the start of the first staff and a 'ceixu' marking in the middle of the second staff. The music continues with complex rhythmic patterns.

Handwritten musical notation on a grand staff, measures 13-16. The final system on the page shows the continuation of the musical piece, ending with a double bar line. The notation remains consistent with the previous systems.





4

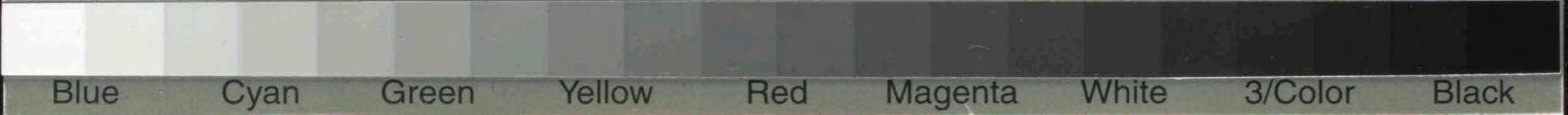
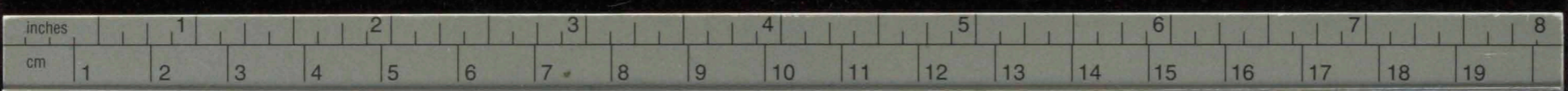
6

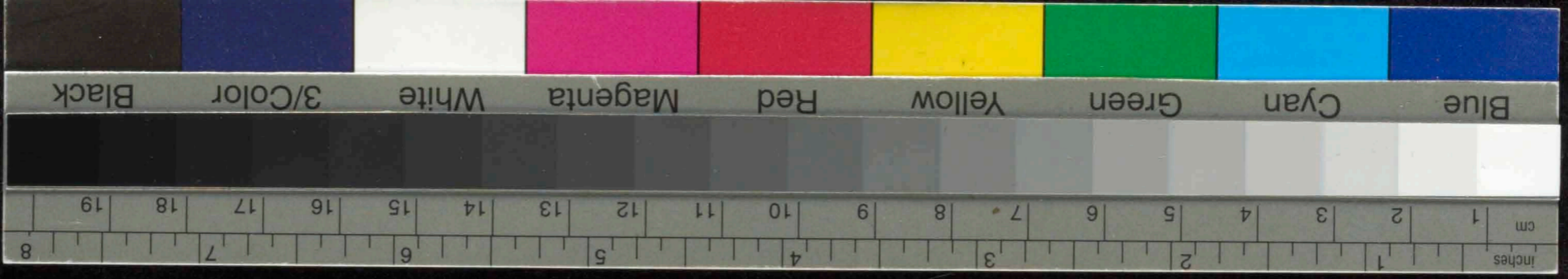
Handwritten musical notation on a grand staff. The music features a complex texture with many beamed notes and rests. A *cresc.* marking is present above the staff.

Handwritten musical notation on a grand staff. The music continues with dense textures. A *decres.* marking is visible above the staff.

Handwritten musical notation on a grand staff. A large section of the music is circled in black and crossed out with red diagonal lines. A *Dimi.* marking is present above the staff.

Handwritten musical notation on a grand staff. The music concludes with several measures. A *cresc.* marking is present above the staff.





4

8

The first system of handwritten musical notation consists of two staves. The upper staff is in treble clef with a key signature of one flat (B-flat). The lower staff is in bass clef with a key signature of one flat. The music features a complex melodic line with many slurs and a bass line with frequent chords and some grace notes.

The second system of handwritten musical notation consists of two staves. The upper staff is in treble clef with a key signature of one flat. The lower staff is in bass clef with a key signature of one flat. The word "cresc." is written above the lower staff. The notation includes various rhythmic values and slurs.

The third system of handwritten musical notation consists of two staves. The upper staff is in treble clef with a key signature of one flat. The lower staff is in bass clef with a key signature of one flat. The system concludes with a large, dense, scribbled-out section in the lower staff.

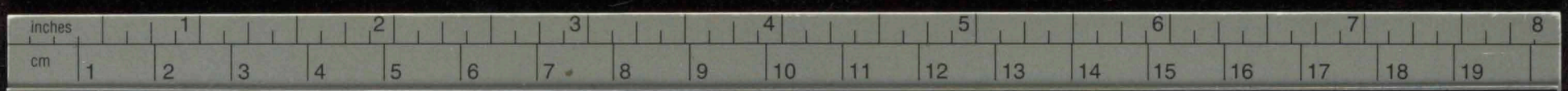
The fourth system of handwritten musical notation consists of two staves. The upper staff is in treble clef with a key signature of one flat. The lower staff is in bass clef with a key signature of one flat. The word "dim." is written above the lower staff. The notation includes various rhythmic values and slurs.

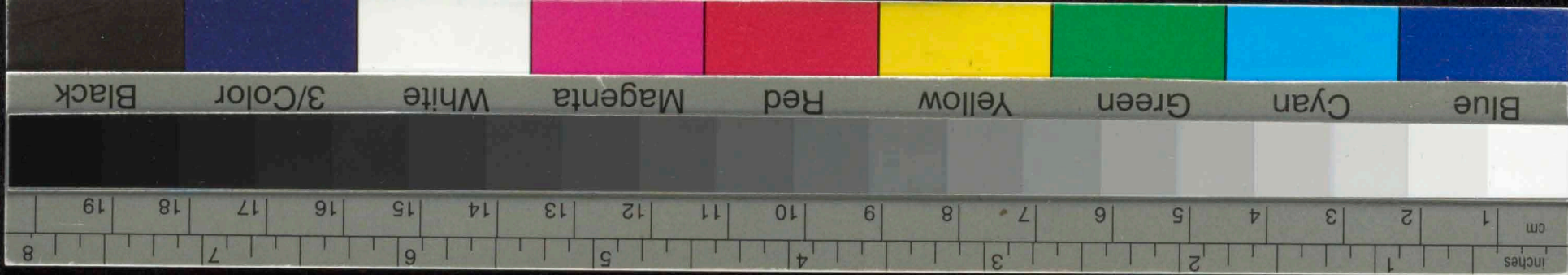
Handwritten musical notation on a grand staff. The right hand part features a melodic line with a slur and the instruction *sempre legato*. The left hand part consists of a bass line with some notes marked with 'p' and 'r'. The music is written in a key with one flat (B-flat).

Handwritten musical notation on a grand staff, starting with a measure number '5'. The right hand part contains dense chordal textures with some notes marked with '10-5' and '10'. The left hand part continues the bass line.

Handwritten musical notation on a grand staff. The right hand part features a melodic line with a slur and the instruction *gua*. The left hand part continues the bass line.

Handwritten musical notation on a grand staff, starting with a measure number '3'. The right hand part features a melodic line with a slur and the instruction *gua*. The left hand part continues the bass line.





4

10

Handwritten musical notation on a grand staff. The upper staff is marked *Coro* and contains complex rhythmic patterns with many beamed notes. The lower staff is marked *Organo* and contains a simpler accompaniment. The key signature has two flats (B-flat and E-flat).

Handwritten musical notation on a grand staff. The upper staff features a *cresc.* (crescendo) marking and dense, rapid passages. The lower staff provides a steady accompaniment. The key signature has two flats.

Handwritten musical notation on a grand staff. The upper staff is marked *Organo* and contains a melodic line with some rests. The lower staff has a more active accompaniment. The key signature has two flats.

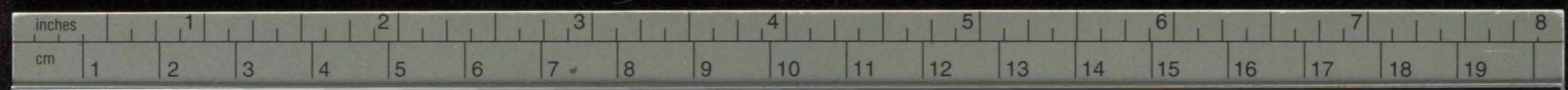
Handwritten musical notation on a grand staff. The upper staff contains a melodic line with some rests and a *f* (forte) marking. The lower staff has a simple accompaniment. The key signature has two flats.

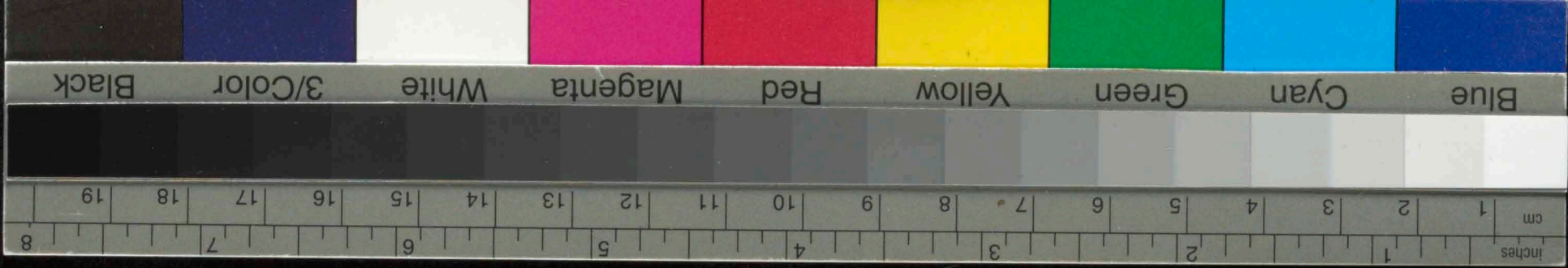
12-5

Adesura

13-6

Adesura





4

12

A handwritten musical score on four systems of staves. Each system consists of a grand staff with a treble clef on the upper staff and a bass clef on the lower staff. The notation includes various note values, rests, and dynamic markings such as *diminu*, *cresc*, and *dimu*. The music is written in a historical style with some complex rhythmic patterns and articulation marks. The paper shows signs of age, including some staining and wear at the edges.

Allegretto

14-7
18-6

No. 2

13

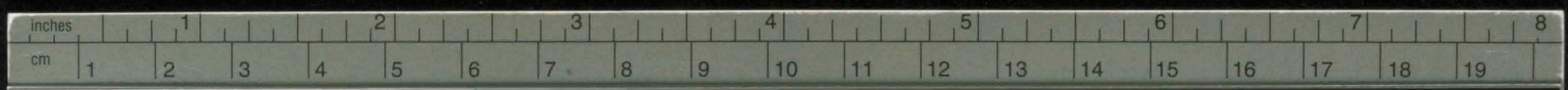
rompre legato

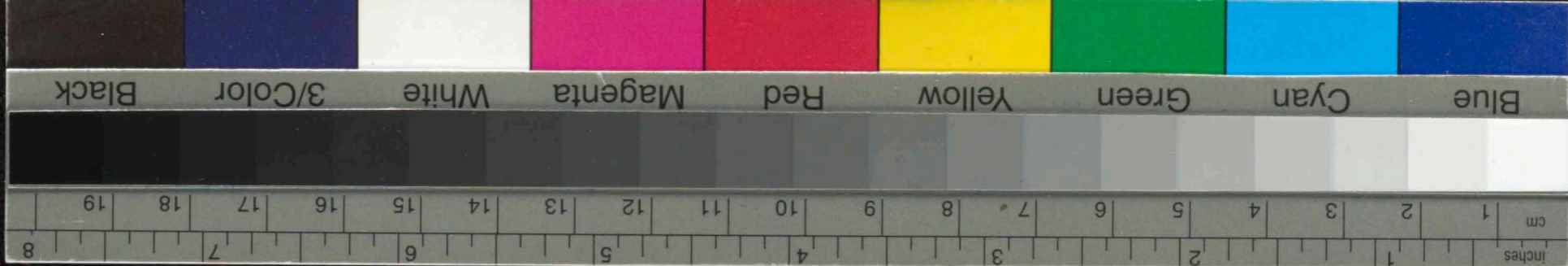
Handwritten musical notation on a grand staff. The upper staff is in treble clef and the lower staff is in bass clef. The key signature has two flats (B-flat and E-flat). The time signature is 18/6. The notation includes various note values, rests, and dynamic markings such as *mp* and *pp*.

A large section of the manuscript is heavily obscured by a dense, crisscrossing grid of dark ink lines, forming a diamond or lattice pattern. This appears to be a correction or a heavily crossed-out section of the original score.

Handwritten musical notation on a grand staff, continuing the piece. It features complex rhythmic patterns and dynamic markings.

Handwritten musical notation on a grand staff, showing further development of the musical theme with various articulations and dynamics.





4

14

Handwritten musical notation on a five-line staff. The notation includes various note values, rests, and dynamic markings such as *pp* and *ppp*. A large section of the staff is obscured by a dense, diagonal cross-hatch pattern.

Handwritten musical notation on a five-line staff, continuing the piece with various note values and rests.

Handwritten musical notation on a five-line staff. It features a large slur over the first few measures, with the word *ritard.* written above it. Other markings include *trio* and *pp*.

Handwritten musical notation on a five-line staff. It includes dynamic markings such as *decresc.* and *mo*.

Handwritten musical notation on a five-line staff. It begins with the number *15-4* written above the first measure. The notation includes various note values and rests, with the word *crep.* written near the end of the staff.

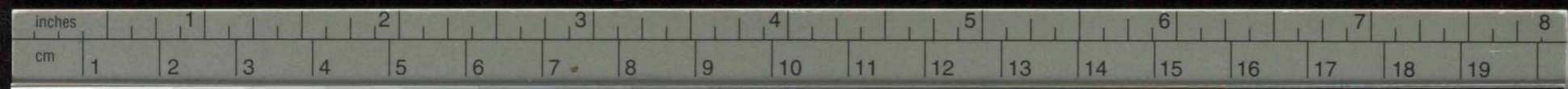
Handwritten musical notation on a five-line staff. The notation includes treble clef, key signature with two sharps (F# and C#), and a complex melodic line with many slurs and ties. The word "Loco" is written above the staff in the middle section.

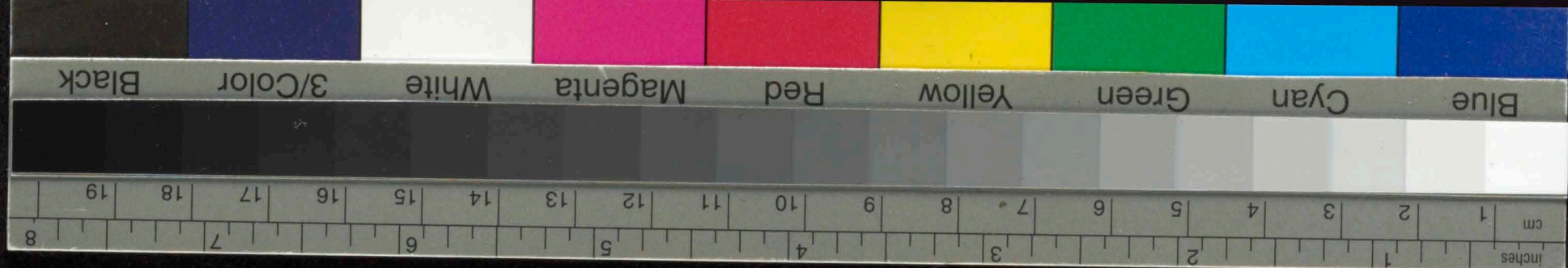
Handwritten musical notation on a five-line staff. The notation includes treble clef, key signature with two flats (Bb and Eb), and a melodic line with slurs. The word "Deciso" is written above the staff in the middle section.

Handwritten musical notation on a five-line staff. The notation includes treble clef, key signature with two flats (Bb and Eb), and a melodic line with slurs. The word "Deciso" is written above the staff in the middle section.

Handwritten musical notation on a five-line staff. The notation includes treble clef, key signature with two flats (Bb and Eb), and a melodic line with slurs. The word "Deciso" is written above the staff in the middle section.

Allegretto
D.C.





No. 3.

1-5 *Andante*
Thema

The first system of handwritten musical notation consists of two staves. The left staff is in treble clef and the right in bass clef. The key signature has two flats (B-flat and E-flat), and the time signature is common time (C). The tempo marking is 'Andante'. The music begins with a 'Thema' label and a dynamic marking of 'p'. The notation includes various note values, rests, and articulation marks.

The second system of handwritten musical notation continues the piece. It features two staves with complex rhythmic patterns and dynamic markings. A 'cresc.' (crescendo) marking is visible above the right staff.

The third system of handwritten musical notation continues the piece. It features two staves with complex rhythmic patterns and dynamic markings. A 'dimin.' (diminuendo) marking is visible above the right staff, and a 'cresc.' (crescendo) marking is visible below the left staff.

Var. I. *ligato*

The first variation is marked 'Var. I. ligato'. It consists of two staves with a dense, rhythmic texture. The dynamic marking is 'pp' (pianissimo).

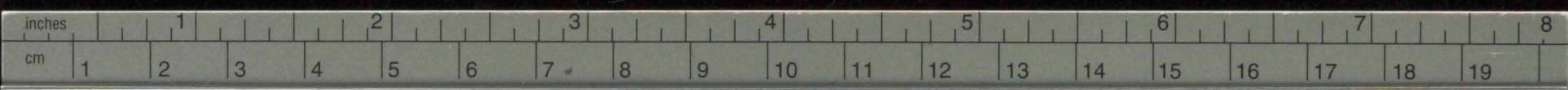
The second variation consists of two staves with a dense, rhythmic texture. The dynamic marking is 'pp' (pianissimo). The notation includes various note values, rests, and articulation marks.

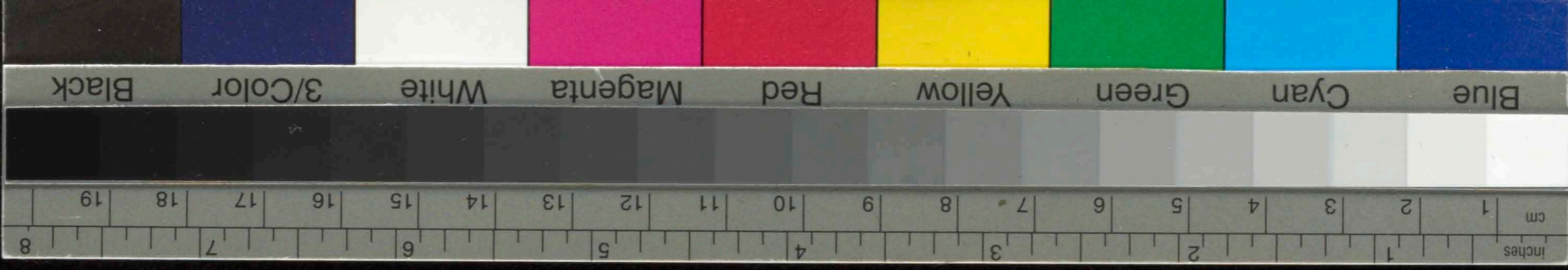
Handwritten musical notation on a grand staff. The music is written in a key with two flats (B-flat and E-flat) and a common time signature. It features complex rhythmic patterns, including sixteenth and thirty-second notes, and dynamic markings such as *p* and *pp*.

Handwritten musical notation on a grand staff. It includes the instruction *Dimin.* and *Var. II. 3-6*. The notation is dense with many notes and rests, and includes dynamic markings like *p*.

Handwritten musical notation on a grand staff. The music consists of many beamed notes, creating a dense texture. It includes various accidentals and dynamic markings.

Handwritten musical notation on a grand staff. It features a *cresc.* marking and ends with a double bar line and a flourish. The notation includes many beamed notes and dynamic markings.





Handwritten musical notation on a grand staff. The right-hand part features a complex, dense texture with many beamed notes. The word "secreto" is written in the right margin.

Handwritten musical notation on a grand staff. The right-hand part contains a large, circled section of dense, beamed notes.

Handwritten musical notation on a grand staff. The right-hand part includes a section of notes with the annotation "loco" above and "dimin." below.

Handwritten musical notation on a grand staff. The left-hand part is marked with "4-5" and "Var. III." in the margin.

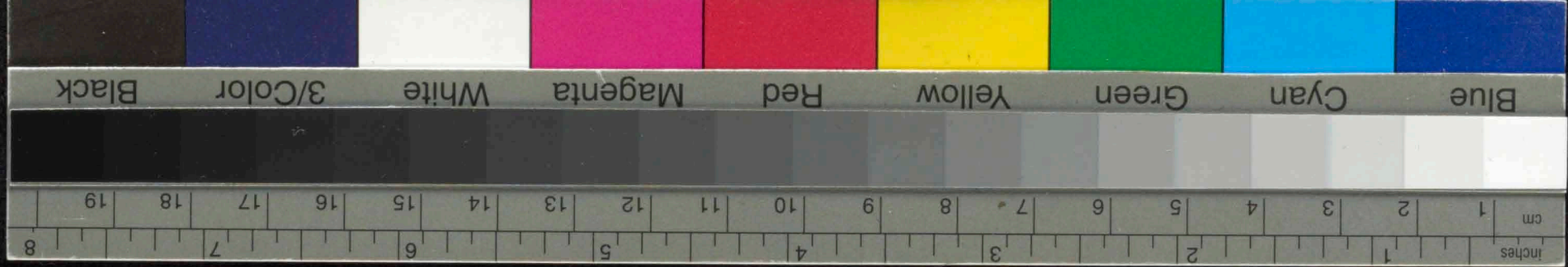
Handwritten musical notation on a grand staff, first system. The music is in a key with three flats (E-flat major or C minor) and a common time signature. It features a complex texture with many beamed notes and slurs. A star symbol is written above the staff.

Handwritten musical notation on a grand staff, second system. Similar to the first system, it contains dense, beamed notes and slurs.

Handwritten musical notation on a grand staff, third system. The notation continues with complex rhythmic patterns and slurs.

Handwritten musical notation on a grand staff, fourth system. This system includes a "cresc." marking and a large "V." marking at the end of the system.





The first system of handwritten musical notation consists of two staves. The upper staff features a treble clef and a key signature of three flats (B-flat, E-flat, A-flat). The lower staff has a bass clef and the same key signature. The music is written in a style characteristic of the late 18th or early 19th century. A large oval bracket encompasses the right half of the system. The word "Decresc." is written in the right margin of this system.

The second system of handwritten musical notation also consists of two staves with treble and bass clefs and a three-flat key signature. The notation includes various rhythmic values and dynamic markings. The word "Var. IV." is written above the right side of the system.

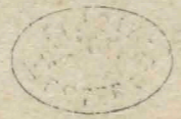
The third system of handwritten musical notation consists of two staves with treble and bass clefs and a three-flat key signature. The notation is dense with many notes and rests. A circled number "6-6" is written above the first few measures of the system.

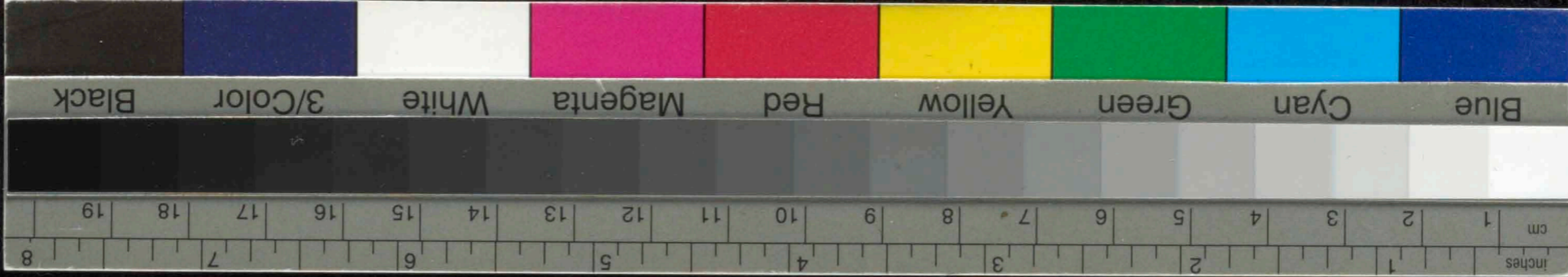
The fourth system of handwritten musical notation consists of two staves with treble and bass clefs and a three-flat key signature. The notation includes dynamic markings such as "loco", "Decresc.", and "p.". A circled number "3" is written above the right side of the system.

Handwritten musical notation on two staves, first system. The top staff is in treble clef and the bottom in bass clef. The key signature has four flats. The music features complex rhythmic patterns with many beamed notes. A "cresc." marking is present above the top staff.

Handwritten musical notation on two staves, second system. It includes dynamic markings "p" and "f", and performance directions "1.", "2.", "lovo", and "cresc.". The notation is dense with many notes.

Handwritten musical notation on two staves, third system. It includes the marking "Var. V." and "dimin.". The notation continues with complex rhythmic patterns.





ar. V.
7/6
guz *loco*

The first system of handwritten musical notation consists of two staves. The upper staff is in treble clef and the lower in bass clef. The time signature is 7/6. The music is written in a key with two flats. It features dense, rapid passages with many beamed notes. Dynamic markings include *guz* and *loco*. There are also some handwritten numbers like '2' and '3' above notes.

The second system continues the musical piece with similar dense, beamed rhythmic patterns in both staves. The notation is highly detailed with many slurs and ties.

guz *loco* *guz* *loco* 2.

The third system features a more varied rhythmic texture. It includes dynamic markings such as *guz* and *loco*, and repeat signs with first and second endings. The notation remains dense and intricate.

loco *guz*

The fourth system concludes the page with further complex rhythmic patterns. It includes dynamic markings like *loco* and *guz*, and continues the dense, beamed notation seen in the previous systems.

8-56

Handwritten musical notation for the first system, featuring a treble and bass clef with complex rhythmic patterns and slurs.

Handwritten musical notation for the second system, including a 'loco' marking and a large slur encompassing the entire system.

4

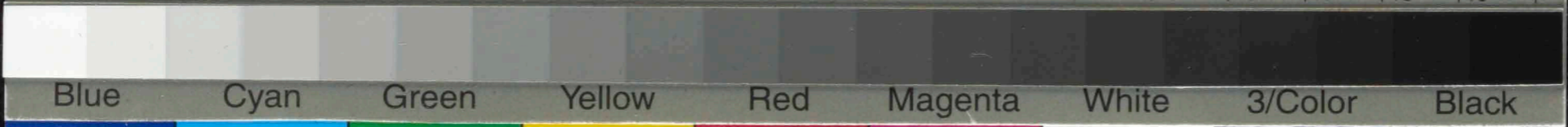
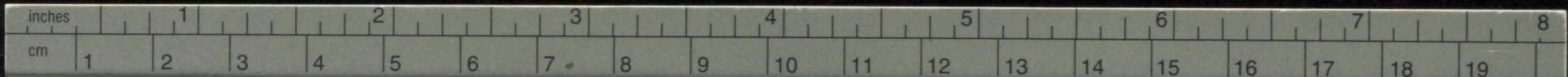
Deina

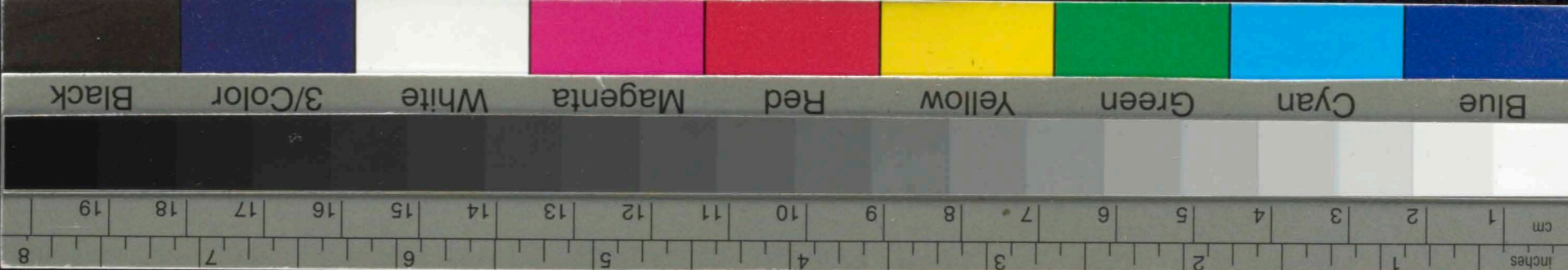
ritardando

Piu lento

Handwritten musical notation for the third system, marked 'ritardando' and 'Piu lento', with a 'Deina' annotation.

Handwritten musical notation for the fourth system, featuring various slurs and dynamic markings.





24

Allegro scherzando

No. 4

Pianoforte

9-6

Handwritten musical notation for the first system, featuring a treble and bass clef with a 3/8 time signature. The music includes various note values, rests, and dynamic markings.

Handwritten musical notation for the second system, continuing the piece with similar notation and dynamics.

Handwritten musical notation for the third system, showing more complex rhythmic patterns and articulation.

Handwritten musical notation for the fourth system, concluding the page with a wavy line above the staff and the word "loco" written above the notes.

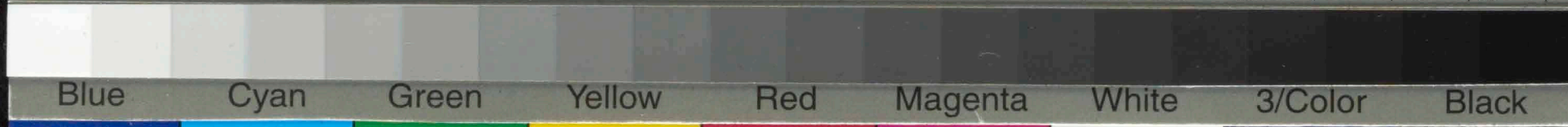
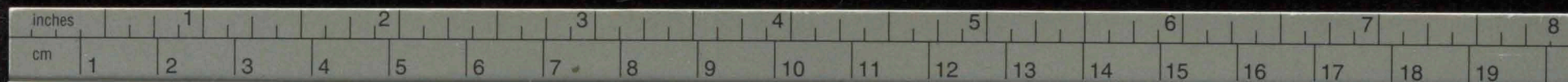
10-6
~~9-6~~

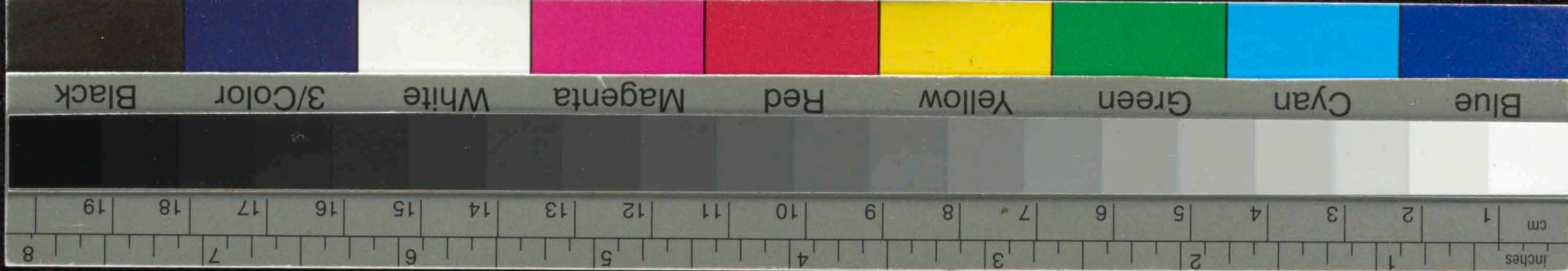
Handwritten musical notation on a grand staff. The right-hand part features a melodic line with a wavy line above it, and the left-hand part provides harmonic accompaniment. Performance markings include *ritard* and *a tempo*.

Handwritten musical notation on a grand staff, continuing the piece with various rhythmic patterns and chordal textures.

Handwritten musical notation on a grand staff, featuring a section with a wavy line above the right-hand part. Performance markings include *res* and *alu*.

Handwritten musical notation on a grand staff, concluding the piece with a wavy line above the right-hand part.





26

Handwritten musical notation on a grand staff. The upper staff features a melodic line with various ornaments and slurs, including the word "lento" written above. The lower staff contains a bass line with chords and rhythmic markings.

Handwritten musical notation on a grand staff, starting with the number "10" in the left margin. The upper staff is marked "ligato" and contains a melodic line with many slurs. The lower staff contains a bass line with chords and rhythmic markings.

Handwritten musical notation on a grand staff. The upper staff features a melodic line with many slurs and ornaments. The lower staff contains a bass line with chords and rhythmic markings.

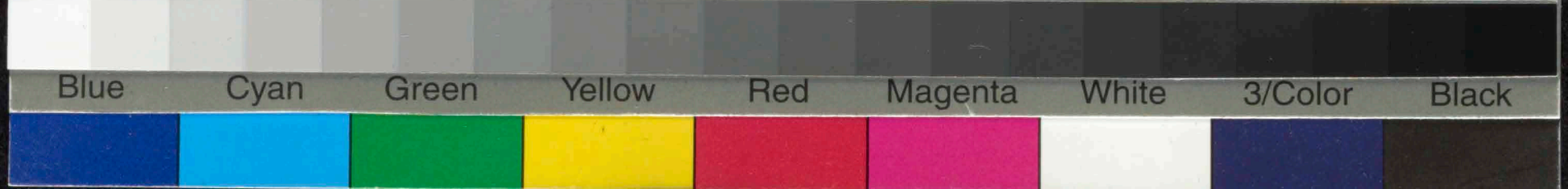
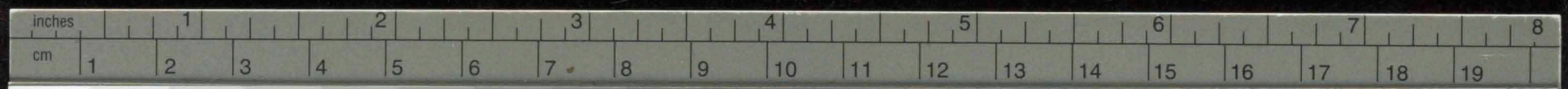
Handwritten musical notation on a grand staff. The upper staff features a melodic line with many slurs and ornaments, including the word "lento" written above. The lower staff contains a bass line with chords and rhythmic markings.

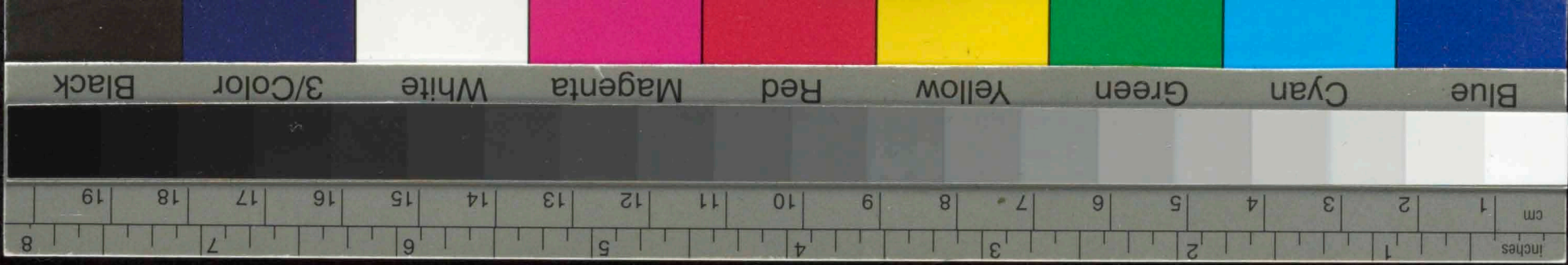
Handwritten musical notation on a grand staff. The upper staff contains a melodic line with various ornaments and slurs. The lower staff contains a bass line with chords and rhythmic markings. The key signature has two flats (B-flat and E-flat).

Handwritten musical notation on a grand staff. The upper staff begins with a treble clef and a time signature of 12/7. The notation includes slurs and dynamic markings. The lower staff contains a bass line with chords. A handwritten instruction *con delicatezza* is written above the upper staff.

Handwritten musical notation on a grand staff. The upper staff features a melodic line with slurs and ornaments. The lower staff contains a bass line with chords and rhythmic markings.

Handwritten musical notation on a grand staff. The upper staff contains a melodic line with slurs and ornaments. The lower staff contains a bass line with chords and rhythmic markings. The notation ends with a double bar line and a checkmark.





Handwritten musical notation on two staves. The upper staff is in treble clef and the lower in bass clef. The key signature has two flats (B-flat and E-flat). The time signature is 6/8. The notation includes various chords, some with accidentals, and some measures are crossed out with an 'X'. The word *giu* is written above the first measure.

Handwritten musical notation on two staves. The upper staff is in treble clef and the lower in bass clef. The key signature has two flats. The time signature is 6/8. The notation includes various chords and melodic lines. The word *giu* is written above the first measure, and *loco* is written above the second measure. A circled '12' is written above the third measure. The number '13-7' is written in the right margin.

Handwritten musical notation on two staves. The upper staff is in treble clef and the lower in bass clef. The key signature has two flats. The time signature is 6/8. The notation features dense chordal textures and melodic lines. The word *giu* is written above the first measure, and *loco* is written above the second measure.

Handwritten musical notation on two staves. The upper staff is in treble clef and the lower in bass clef. The key signature has two flats. The time signature is 6/8. The notation includes dense chordal textures and melodic lines. The word *giu* is written above the first measure.

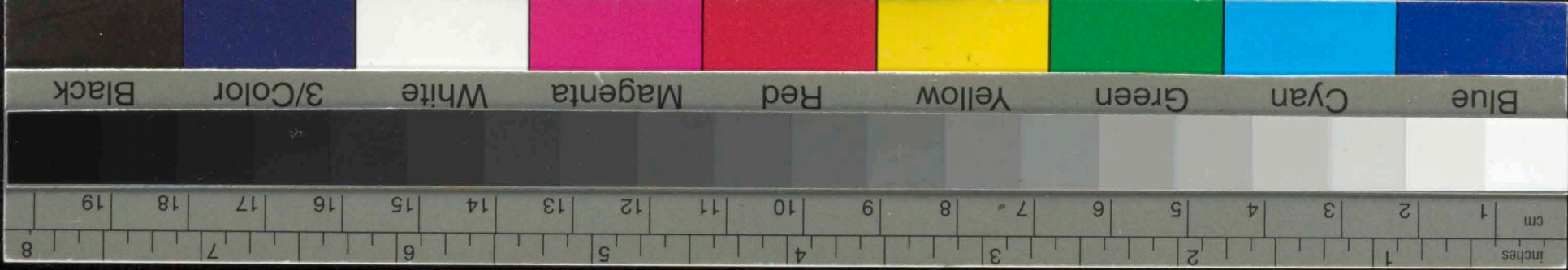
Handwritten musical notation on a five-line staff. The notation is dense, featuring complex rhythmic patterns with many beamed notes and frequent accidentals (sharps and naturals). The staff is divided into measures by vertical bar lines.

Handwritten musical notation on a five-line staff, continuing the complex rhythmic and melodic patterns from the previous system. It includes various note values, rests, and accidentals.

Handwritten musical notation on a five-line staff. This system shows a change in rhythmic structure, with some notes marked with 'x' above them. There are also some numerical markings like '14-7' and '47' near the end of the staff.

Handwritten musical notation on a five-line staff, featuring a different rhythmic motif. The notation includes many beamed notes and rests, with some markings above the staff.





Handwritten scribbles or notes at the top center of the page.

Handwritten musical notation on a five-line staff. The notation includes notes, rests, and dynamic markings such as *gu*, *loco*, and *over*. The piece concludes with a double bar line and a repeat sign.

Handwritten musical notation on a five-line staff, continuing the piece. It features notes, rests, and dynamic markings like *gu*, *loco*, and *over*. The notation ends with a double bar line and a repeat sign.

Handwritten musical notation on a five-line staff. This section includes notes, rests, and dynamic markings such as *gu*, *loco*, and *over*. The notation concludes with a double bar line and a repeat sign.

Handwritten musical notation on a five-line staff, the final section on the page. It contains notes, rests, and dynamic markings like *gu*, *loco*, and *over*. The piece ends with a double bar line and a repeat sign.

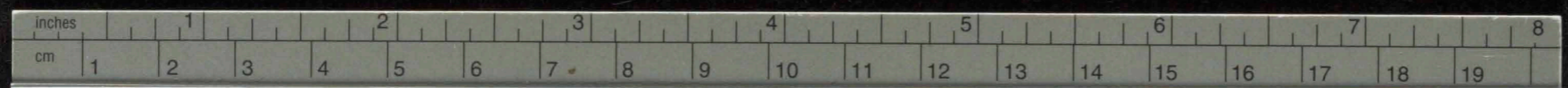
15-67

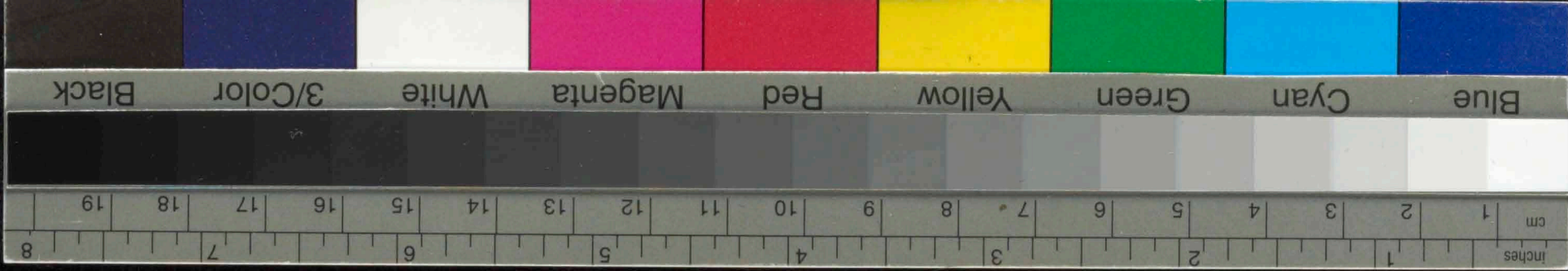
Handwritten musical notation on a grand staff. The upper staff contains a melodic line with various notes and rests, including a section with a slur and a fermata. The lower staff contains a bass line with notes and rests. There are some markings above the upper staff, possibly indicating dynamics or performance instructions.

Handwritten musical notation on a grand staff. The upper staff has a melodic line with a large section that is heavily scribbled out with diagonal lines. The lower staff has a bass line with notes and rests. There are some markings above the upper staff.

Handwritten musical notation on a grand staff. The upper staff has a melodic line with a large section that is heavily scribbled out with diagonal lines. The lower staff has a bass line with notes and rests. There are some markings above the upper staff.

Handwritten musical notation on a grand staff. The upper staff has a melodic line with notes and rests, including a section with a slur and a fermata. The lower staff has a bass line with notes and rests. There are some markings above the upper staff, including the word "Dimin." and "tempo".





The first system of handwritten musical notation consists of two staves. The upper staff is in treble clef with a key signature of two flats and a common time signature. It features a melodic line with various note values, including eighth and sixteenth notes, and rests. The lower staff is in bass clef and provides harmonic accompaniment with chords and single notes. There are some handwritten annotations above the first few measures.

The second system of handwritten musical notation consists of two staves. The upper staff continues the melodic line from the first system, showing more complex rhythmic patterns and some slurs. The lower staff continues the accompaniment. There are several handwritten annotations, including a large '16-5' written above the staff.

The third system of handwritten musical notation consists of two staves. The upper staff shows a continuation of the melodic line with some slurs and dynamic markings. The lower staff continues the accompaniment. A large '16-5' is written above the staff, similar to the second system.

The fourth system of handwritten musical notation consists of two staves. The upper staff continues the melodic line with some slurs and dynamic markings. The lower staff continues the accompaniment. There are several handwritten annotations, including a large '16-5' written above the staff.

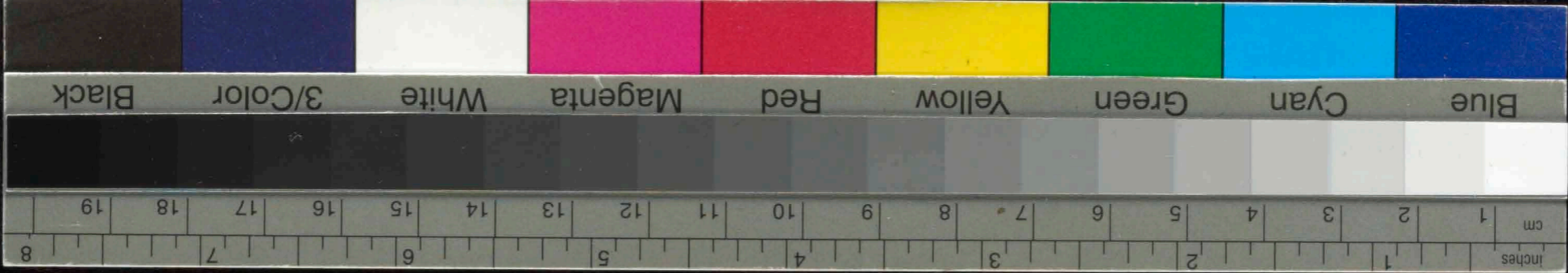
loco
giu
loco
ritard.

a tempo

17-7

giu





34

8va

loso to

8va

6

4

3

2

1

0

Handwritten musical notation for the first system, consisting of two staves. The upper staff has a treble clef and a wavy line above it. The lower staff has a bass clef. The notation includes various notes, rests, and dynamic markings.

8va

decres

no

Handwritten musical notation for the second system, consisting of two staves. The upper staff has a treble clef and a wavy line above it. The lower staff has a bass clef. The notation includes various notes, rests, and dynamic markings.

Handwritten musical notation for the third system, consisting of two staves. The upper staff has a treble clef and a wavy line above it. The lower staff has a bass clef. The notation includes various notes, rests, and dynamic markings.

18-7

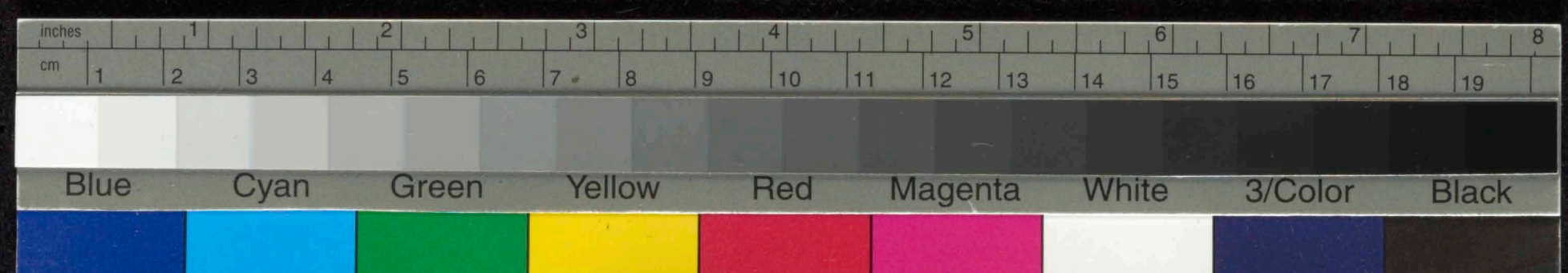
Handwritten musical notation for the fourth system, consisting of two staves. The upper staff has a treble clef and a wavy line above it. The lower staff has a bass clef. The notation includes various notes, rests, and dynamic markings.

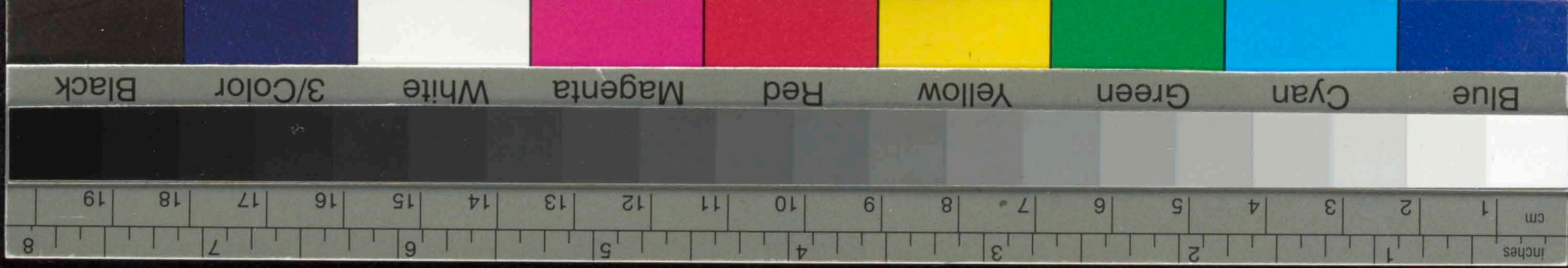
Handwritten musical notation on two staves. The top staff begins with a treble clef and a key signature of two flats. The bottom staff begins with a bass clef and the same key signature. The music consists of several measures with various note values and rests. There are some markings above the notes, possibly indicating fingerings or dynamics.

Handwritten musical notation on two staves, continuing from the previous system. The notation includes notes, rests, and some dynamic markings such as *dim* (diminuendo) and *pp* (pianissimo).

Handwritten musical notation on two staves. The section is marked *Allegro* in the center. The notation features a mix of note values and rests, with some slurs and accents.

Handwritten musical notation on two staves, concluding the page. The notation includes notes, rests, and dynamic markings like *pp*. The piece ends with a double bar line and a fermata-like flourish.





36

Handwritten musical notation on a five-line staff. The notation includes a treble clef, a key signature of two flats (B-flat and E-flat), and a time signature of 3/8. The music consists of a series of chords and melodic lines, with some notes beamed together. The word "poco" is written above the first few notes.

Handwritten musical notation on a five-line staff. The notation includes a treble clef, a key signature of two flats (B-flat and E-flat), and a time signature of 3/8. The music features a series of chords and melodic lines, with some notes beamed together. The word "poco" is written above the first few notes. There are two faint circular stamps on the page, one above and one below the staff.

From Notebook for Anna Bach
Viol. Sonata No. 1
36. 4. 1781